

Welcome to  
Nordic ASR 2025  
NM 2025



**Contestant:** 7 - Ole Rennehvammen and Frank Olaf Sem-Jacobsen in LN  
**Task type:** Air Sports Race  
**Competition date:** 2025-07-06  
**Airspeed:** 70 knots  
**Tasks wind:** 245@15  
**Departure:** 12:25:00  
**Start point:** 12:30:00  
**Finish by:** 14:25:00 (tracking will stop)



Share on Facebook

## Rules

For this task the corridor width is 1.0 NM. Flying outside of the corridor for more than 5 seconds gives a penalty of 1 point(s) per second. There is a maximum penalty of 100 points for being outside the corridor per leg. There are timed gates on the track. The penalty for crossing the gate at the wrong time is 3.0 point(s) per second beyond the first 2.0 seconds. Flying off track by more than 90 degrees for more than 5.0 seconds gives a penalty of 200.0 points. Entering a prohibited area gives a penalty of 50.0 points. Entering a penalty area gives a penalty of 3.0 points per second after the first 0.0 seconds.

## Good luck



Starting point

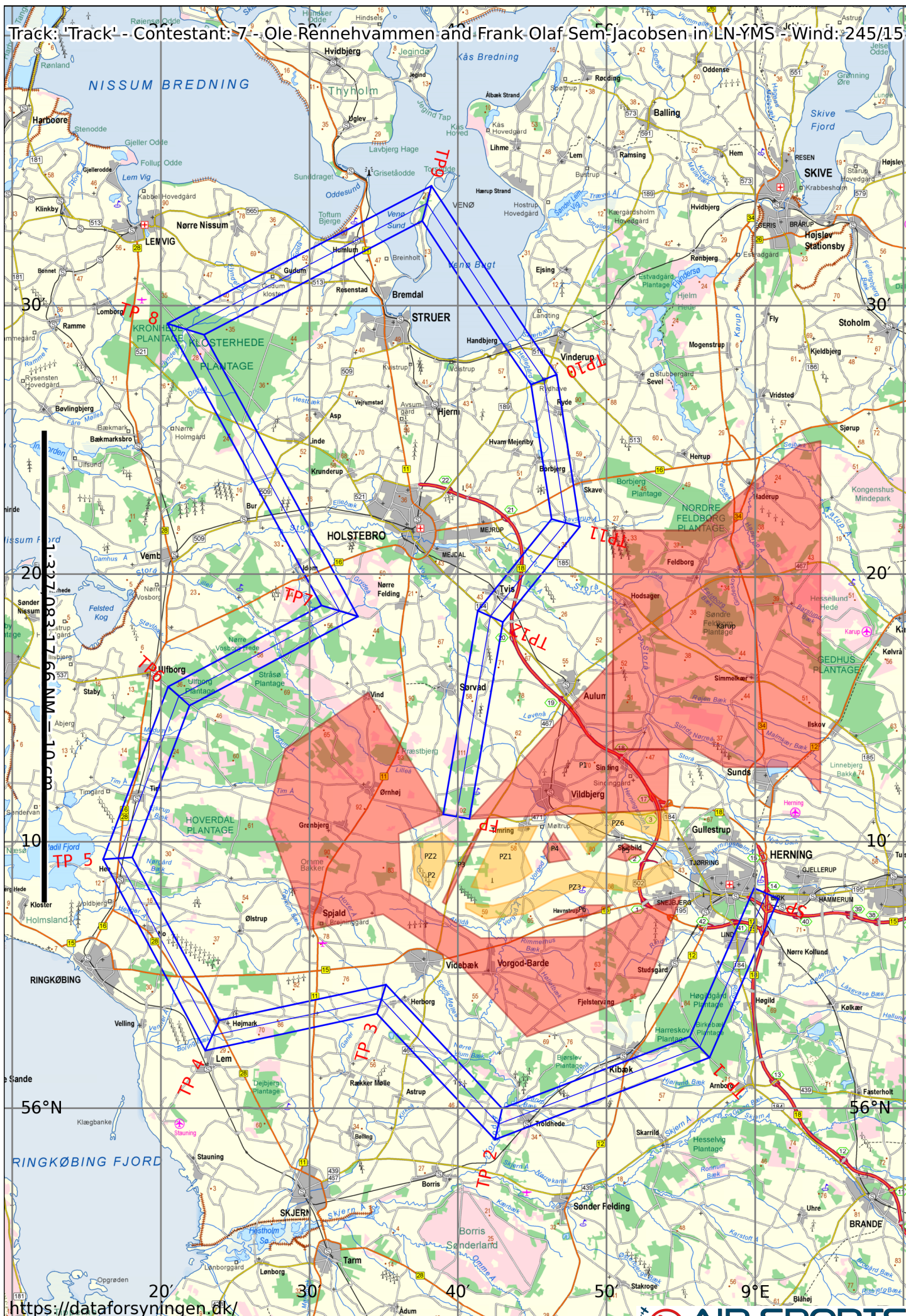


Finish point

## Turning points and time gates

Gate	Leg (NM)	Tot (NM)	TT	TH	GS (kt)	Leg time	Gate Time
SP	-	-	-	-	-	-	12:30:00
TP 1	6.30	6.30	203	212	58.1	0:06:31	12:36:31
TP 2	8.13	14.43	249	248	55.0	0:08:52	12:45:23
TP 3	6.46	20.89	317	305	63.9	0:06:04	12:51:27
TP 4	6.53	27.42	258	255	55.3	0:07:05	12:58:32
TP 5	7.55	34.98	332	320	67.6	0:06:42	13:05:14
TP6	6.50	41.48	21	12	79.9	0:04:53	13:10:07
TP7	6.83	48.30	62	61	85.0	0:04:49	13:14:56
TP 8	11.99	60.30	331	319	67.4	0:10:41	13:25:37
TP9	10.14	70.43	62	62	85.0	0:07:09	13:32:46
TP10	7.88	78.31	145	158	70.9	0:06:41	13:39:27
TP11	5.40	83.71	171	183	64.3	0:05:03	13:44:30
TP12	4.49	88.21	219	224	56.2	0:04:48	13:49:18
FP	7.61	95.81	190	200	60.4	0:07:33	13:56:51

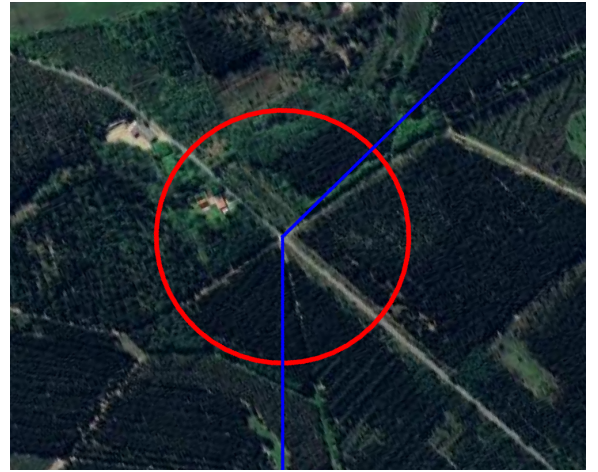
Track: 'Track' - Contestant: 7 - Ole Rennehvammen and Frank Olaf Sem-Jacobsen in LN-YMS - Wind: 245/15



# Turning point and time gate images 1/3



SP



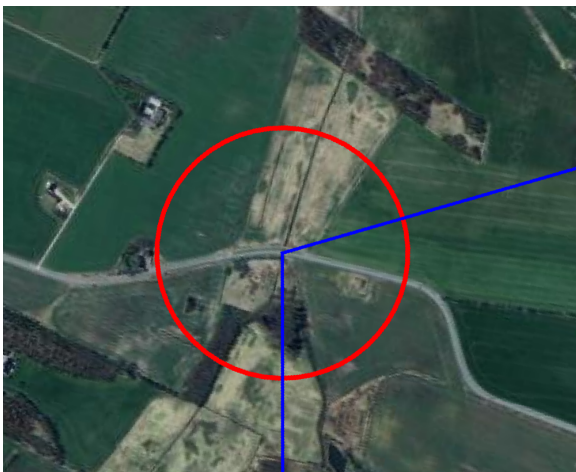
TP 1



TP 2



TP 3

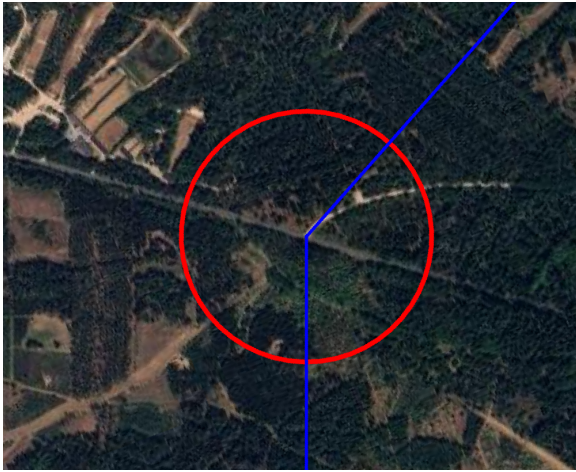


TP 4



TP 5

Turning point and time gate images 2/3



TP6



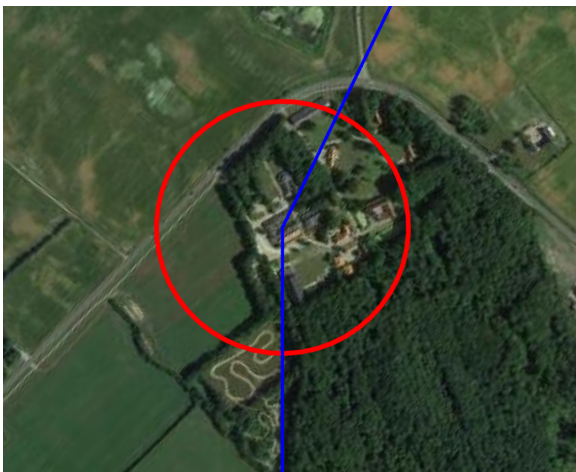
TP7



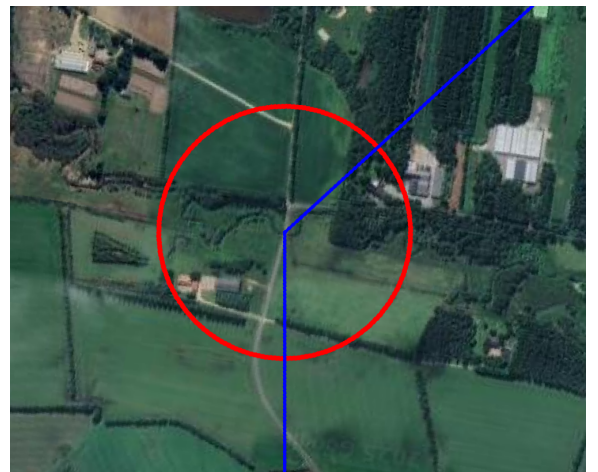
TP 8



TP9



TP10



TP11

Turning point and time gate images 3/3



TP12



FP